

JUST A HUT and BLACK DUNNY

260 Series Map: Kaimanawa, U19

Topo50 Map: BH36 Motutere

How to get to START:

- Exit Taupo on **SH5** for Napier.
- In about 20 – 25 minutes turn right into **Taharua Road**
- After another 7– 8 minutes turn right into **Clements Mill Road** which quickly becomes gravel and enters the forest.
- Around 10 minutes on this gravel, forest road brings you to **Te Iringa** car park on your left, and
- About 2km further on you come to a “**White Bridge**” – wooden and pale coloured
- Several other small camp grounds and car parks are passed
- Park at 56.3km 1 hour 10 minutes from town in a small triangular shaped lay-by on the RHS of the road – there is space for two cars
- Once parked (**JH01**) walk along the road further away from town.

Rough description: A moderate walk of about 5 hours which is best attempted in the company of someone who knows the area and tracks or has a copy of the GPS track and waypoints in their GPS unit. No amazing views but great if you like forest walks often following the Hinemaiaia stream.

The tramp is mainly on uncharted Hunters’ tracks though there are sections with no marks or tracks at all. GPS records indicate 9.4 km are walked with three river crossings and overall altitude gain / loss of 170metres whilst you pass the Black Dunny Hut and the Just Family Hut.

Detail: From the parked car (**JH01** 708masl) continue walking out the road for about 1 – 2 minutes and turn right off the road down what appears to be a road drainage channel (**JH02** 711masl). You are immediately into quite thick forest and all efforts must be made to keep the party together and in touch with each other – this is easy country in which to get lost. Fifteen minutes out and basically you are walking parallel to a stream line and there are some orange and green markers.

There is more sunlight in an open area after about 25 minutes then it is down right into a mini gully (**JH04** 674masl) then there is a narrow V-bottomed valley with steep slopes down and up to cross (**LH05** 655masl) . Go right at a very minor Y-junction (**LH06** 634masl) in 44 minutes and soon you are walking parallel to a relatively wide, very scenic section of river (**LH07** 632masl).

There is a fairly big bend in the river at about 55 minutes walking and you head off to the right (N) at this point (**JH08** 632masl) to reach the “Black Dunny Hut” (**JH09** 642masl) in about 1 hour 17 minutes – you pass the actual “Black Dunny” a few metres before the hut.

The Black Dunny

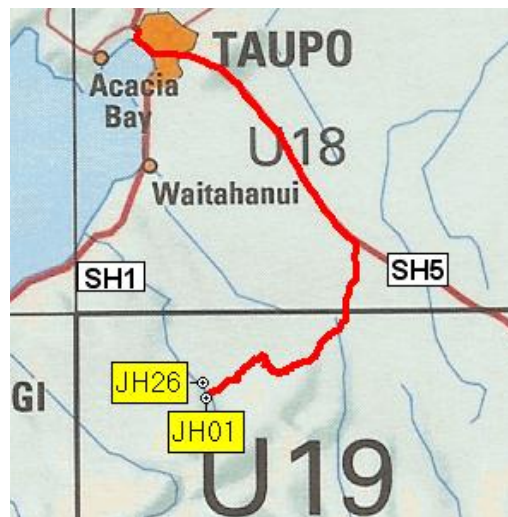


The Hut, or bivouac, is pretty basic but obviously it is still in use by hunters who have all the facilities one would require for basic comfort – especially the roofed dunny with a lid. There are also what might well be shelters for dogs constructed out of ferns. There is a large table with benches outside and this makes a perfect refreshment stop before continuing. From here the route leaves from the right hand side of the hut heading Westward to South-westwards. Thirty minutes out from the hut you are again walking parallel to the river (**JH10** 629masl) then you veer to the right away from the river – keep a good lookout for the paint splurges in case you cannot see the track on the ground.

NZ Grid GPS: Geodetic Datum 1949

NZTM GPS: NZTM on WGS84

Access



All times and distances are measured from Taupo Police station on the Domain and the route followed can be seen as the red line above, JH1 is the car park and JH26 is the Just Hut

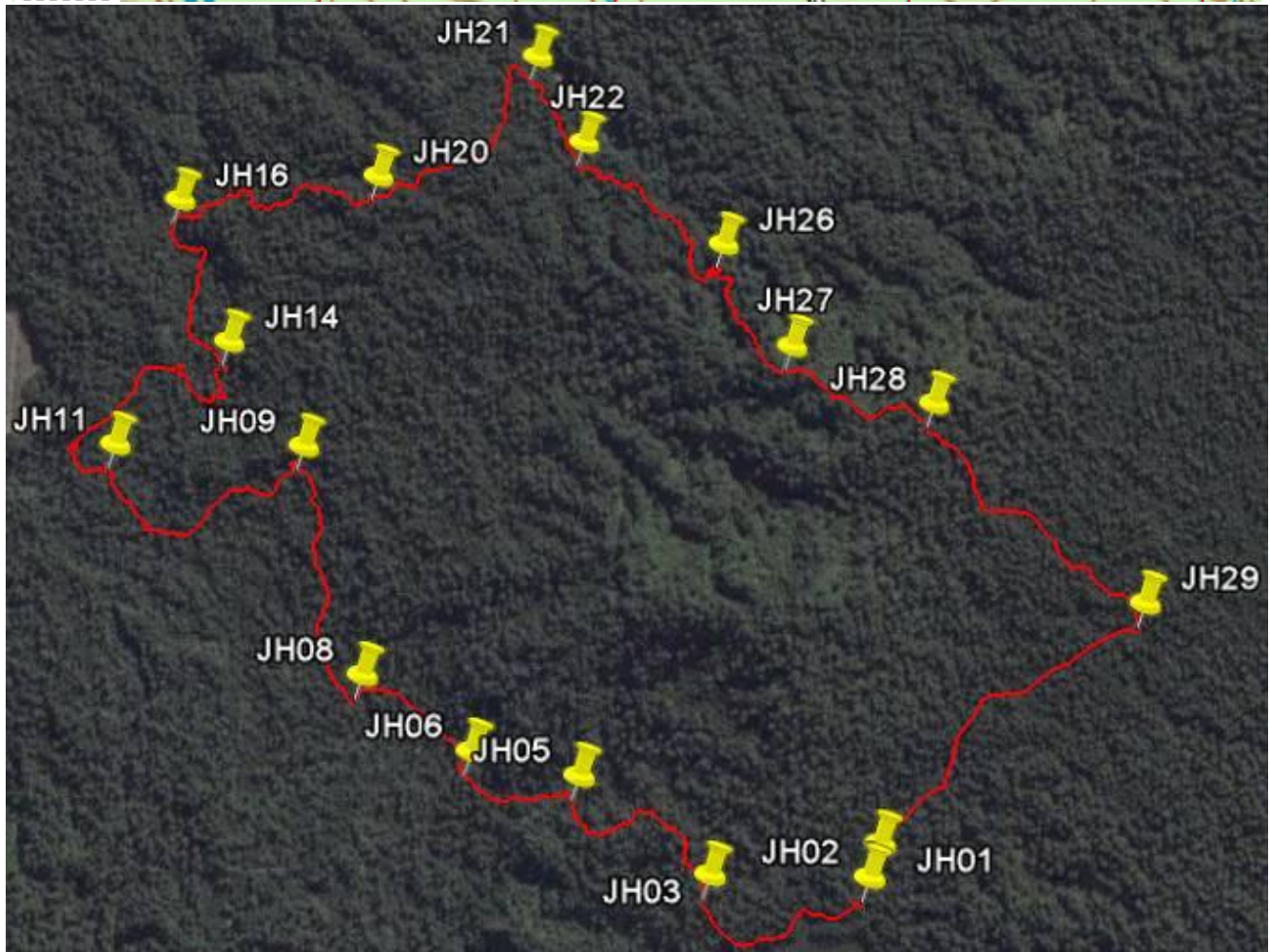
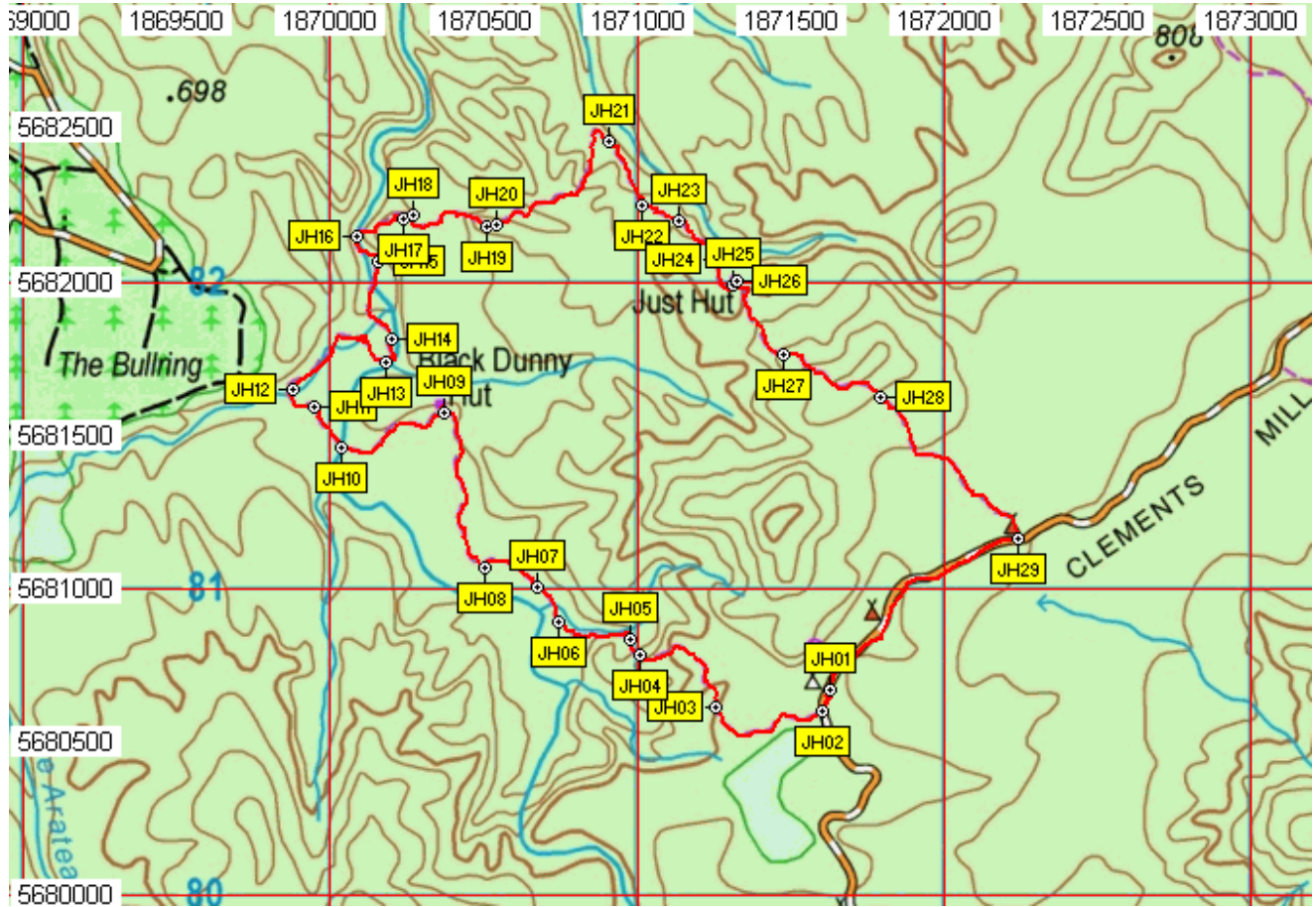
River (JH07)



Outside the Black Dunny hut

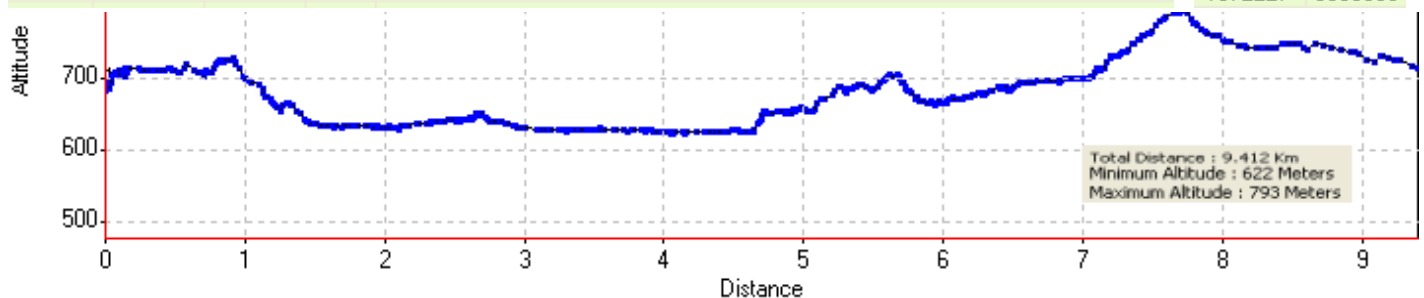


Map and Google Image with GPS data



Waypoints – NZ Grid

Name	Easting	Northing	Alt(m)	Description	Easting	Northing
JH01	2781684	6242277	708	16-MAY-07 8:46:56 Car Park at 56.3km from Taupo on Clements Mill Road	1871619	5680399
JH02	2781658	6242207	711	8:52:23 Two minutes walk SW on road turn into drainage ditch on RHS off the road	1871593	5680328
JH03	2781312	6242224	705	9:05:26 Fifteen min walk parallel to stream, some paint marks then gullied with grunty ascent	1871247	5680346
JH04	2781062	6242391	674	9:22:19 More open for 5 mins then down right into mini gully after long cross-slope	1870997	5680512
JH05	2781031	6242443	655	9:28:20 Thirty three min walk cross V bottomed valley, steep down and up again	1870966	5680564
JH06	2780796	6242504	634	9:39:49 At 44 min walk small Y-junction - go right	1870731	5680625
JH07	2780728	6242615	632	9:44:44 At 48 min walk at edge of river then parallel with river	1870663	5680736
JH08	2780558	6242676	632	9:50:25 Bend in river at 55min walk turn N away from river	1870492	5680797
JH09	2780427	6243184	642	10:06:25 One hour 17 min walk, Black Dunny then Black Dunny Hut, head W to SW from hut	1870361	5681305
JH10	2780089	6243070	629	10:34:33 Walk parallel to river then veer right (NW) away from river again, about 1:40 min walk	1870023	5681191
JH11	2780005	6243203	626	10:40:15 At 1:45 min walk first river crossing on huge tree-bridge, slippery but OK	1869939	5681324
JH12	2779930	6243259	627	10:51:07 At 2 hours walking 2nd tree bridge over river at confluence then steeply upwards	1869864	5681380
JH13	2780236	6243346	625	11:03:35 At 2:13 min slip area over the river then tree with arrow for river cross to Dunny Hut	1870170	5681468
JH14	2780258	6243425	622	11:08:51 Third river cross at 2:20 min, wet feet as no bridge	1870192	5681547
JH15	2780210	6243672	625	11:18:18 Boggy at 2:23min with windfalls then steeply upwards	1870144	5681794
JH16	2780143	6243756	625	11:30:28 At 2:40 min bog, rapids then 5min grunt up slope to look for next track - no marks	1870076	5681877
JH17	2780295	6243816	649	11:47:56 Cross top of gorge at top of the uphill grunt at just under 3 hours	1870228	5681938
JH18	2780323	6243825	653	11:49:54 Slight clearing at 3 hrs with wind-falls and track paint marker	1870257	5681947
JH19	2780568	6243787	689	12:05:45 At 3:15 min walk slip left off small ridge	1870502	5681908
JH20	2780596	6243794	683	12:08:19 Lunch in small clearing at 3:20 min total walking time then over top and down into ferns	1870530	5681916
JH21	2780964	6244064	667	12:55:19 Fern area at 4hrs then parallel & into and out of gully (WP)	1870898	5682186
JH22	2781068	6243857	676	13:04:09 At 4:15 min minor Y-junction, left to windfalls then up LHS of gully ridge	1871002	5681979
JH23	2781190	6243808	686	13:12:31 At 4:25 min steep down & right into gully then up narrow ridge on RHS - green marks	1871124	5681930
JH24	2781318	6243679	695	13:20:54 At 4:30 min large tree with a green painted-over sign for Just Hut	1871252	5681802
JH25	2781363	6243600	694	13:25:22 Just Family memorials with cross and ashes	1871298	5681722
JH26	2781381	6243609	699	13:27:03 Just Hut at 4:40min - uphill rest of the way out	1871315	5681732
JH27	2781529	6243371	755	13:45:20 Minor level section after fair grunt uphill from hut at just under 5 hours	1871463	5681493
JH28	2781844	6243230	776	13:59:20 About 5:10min total time faster walking on old road with gentle downslope	1871779	5681352
JH29	2782291	6242771	745	14:14:38 Meet Clements Mill Road at 5 hrs 25 min walking, go right for 10 min to car park	1872227	5680893



Just on 1 hour 45 minutes total time there is the first river crossing of the day, this comprises a large tree (JH11 626masl) acting as a bridge and can present a challenge to some, but in fact the footing is pretty good and with care and by taking time all can cross this – even the Hobbits in the party. Fifteen minutes later the second tree bridge (JH12 627masl) of the day is found at a river confluence – again this is quite an easy crossing. Immediately after this crossing there is some windfall to struggle through then go off uphill.

First tree bridge of the day



The next feature to look out for is an exposed rocky landslip area on the opposite side of the river you are walking by and then there is a large tree with an arrow pointing towards the river (JH13 625masl) – this arrow is indicating a river crossing and a route back to the Black Dunny Hut which is used by the hunters.

Having kept your feet dry so far there is now no choice but paddle across the next river crossing (JH14 622masl) which you reach in about 2 hours 20 minutes.

Just Family memorial



There is a large tree (JH24 695masl) at about 4 hours 30 minutes where a sign for the Just Hut has been over-painted in green and within 10 minutes you are at the hut passing the site where the ashes (JH25 694masl) of several members of the Just Family have been scattered. The hut has several bunks, a fold down table, wood-burner and a well fitted kitchen but no piped water supply!

From the hut (JH26 699masl) it is a slight grunt uphill on the way back to Clements Mill Road but there is a level section (JH27 755masl) at just under 5 hours total walk then progress speeds up when you hit the old road (JH28 776masl), so overgrown you might not see it, which offers easy, fast gentle downhill walking till you meet Clements Mill Road (JH29 745masl) opposite a small car park.

From here is about 10 minutes to the right on the road to the starting point.

Just Hut exterior



Generally the walk can be summed up as offering sight of two pretty good bivouacs or huts, some wonderful large forest trees, great tree or log bridges and the solitude of deep forest – and there are some birds to be heard! But it is not a place to go walking alone without having a fair bit of local knowledge and navigational skills.

The wet boots can now get mucky as there is some bog (JH15 625masl) at 2:20 – 2:40 minutes then some river rapids (JH16 625masl) on the left as you head off on a 5 minute steep uphill grunt to the right.

This uphill grunt is up past a gully on your left and you pass through the head of the gully (JH17 649masl) in about 3 hours walking. At the top there is a gap in the track you have been on and the next one so some careful looking about is needed to locate the paint splodge markers, these are found on some windfalls in a slight clearing (JH18 653masl). Walking in this part is not that easy as great care is needed to stay on track and at 3 hours 15 minutes you slip left off the small ridge you are on (JH19 689masl) and there is a relatively sheltered clearing (JH20 683masl) minutes later which is suitable for a refreshment stop (lunch).

After lunch it is ahead and over the next minor crest then down into a lovely area of ferns then upwards more or less parallel to a gully and finally into the gully (JH21 667masl) in around 4 hours. You are in and out of the gully a bit then at 4 hours 15 minutes go left at a minor Y-junction (JH22 676masl) into some windfalls then up the LHS of a gully ridge. Ten minutes later there is a steep down hill and right into a gully then you follow green marks up a narrow ridge (JH23 686masl) on the RHS.

Just a hut kitchen



Black Dunny fireplace



Notes:

- **GPS** Garmin GPSmap 60CSx
- **WP** = Waypoint as taken by GPS unit
- **masl** = metres above sea level