

## OLD COACH ROAD OHAKUNE

**Topo50 Map:** BJ33 Raetihi & BJ34 Mt Ruapehu

**How to get to START:** Exit Taupo on SH1 southwards to Turangi :

- In Turangi turn off SH1 to SH41 on the right and then turn left off SH41 to SH47
- Pass SH46 from Rangipo on the left, then
- Pass SH48 to Whakapapa on the left
- Left at T-junction at National Park on SH4
- Left to Ohakune on SH49
- On entering the town limits, left to Old Station Road
- Straight at T-junction on Marshalls Road
- Park at the end of the gravel road **WP01** 547masl.

The alternative route to the start is via the Desert Highway and Waiouru approaching Ohakune from the SE instead of the NW

**Rough description:** A fairly easy walk on bike track up the old coach road to pass the old rail tunnel and wander over the historic Hapuawhenua viaduct before continuing to exit near the “Smash Palace” at Horopito. A good walk as there are many information boards covering the history of the area and the railway. The rail line has to be crossed near the end and great care must be taken

**Detail:** From the car park (**WP01** 547masl) it is only a few metres down the gravel end of Marshalls Road to cross a small bridge on to the old coach road beside the first of many notice boards. The road is wide, grass covered and with a gentle slope but in places the old cobbles show through indicating it would have been a bumpy ride in a horse drawn cart. Within half an hour **WP5** 665m is reached with a sign board and the track turns to the SE to soon reach a point (**WP6** 657m) where you decide to check out the old tunnel or not. The track steepens a little as it wends its way up and over the hill in pleasant forest with few giants to admire.

The track now passes under the new concrete viaduct (**WP8** 650m) and follows the old rail line to cross the old, refurbished Hapuawhenua viaduct which has more info boards and a picnic table (**WP10** 650m) for a morning tea break. After this it is back over the viaduct to turn off right uphill on fairly new bike track through good native forest.

### The old coach road



The track now makes its way to the NW working round the odd valley head without too many features to admire apart from the forest till a high point is reached in about two and a half hours (**WP11** 751m) when the direction changes to N for a short spell.

Progress to the NW then resumes until a bridge is crossed (**WP12** 728m) just before reaching a picnic table which overlooks the old Taonui Viaduct (**WP13** 734m) which is a good lunch spot.

Direction now changes to the NE as the track heads upstream on the Taonui Stream then turns sharply to the SW and loses height before passing under the present viaduct.

### Western end of the old tunnel



Then it is over a river bridge (**WP15** 685m) to pass an old derelict iron (**WP16** 699m) viaduct before going right uphill to gain a view of the old pillars of the Haeremare Bridge (**WP18** 714m) in the valley below – there is an information board about the pillars.

The track then continues to the NE and approaches and crosses the main rail line – great caution required here. After that is is less than one kilometre of gentle walking to arrive at a gate (**WP19** 745m) which gives access to farm land and a motorable gravel track out to Horopito.

**GPS:** NZTM on WGS84

### Access to start



### Exit at end



### Superb forest

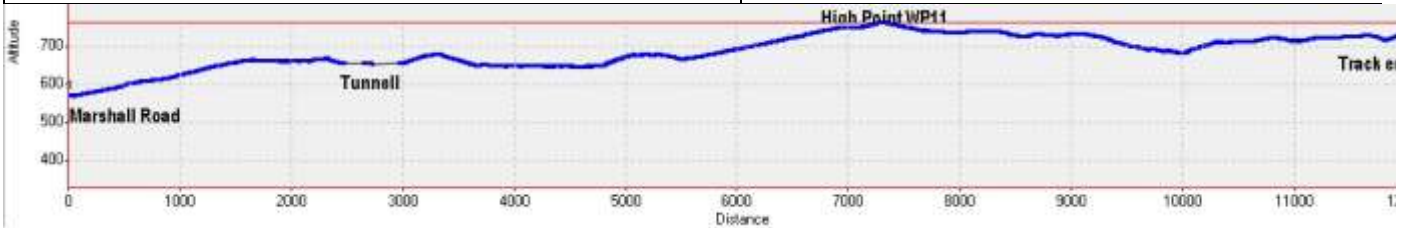
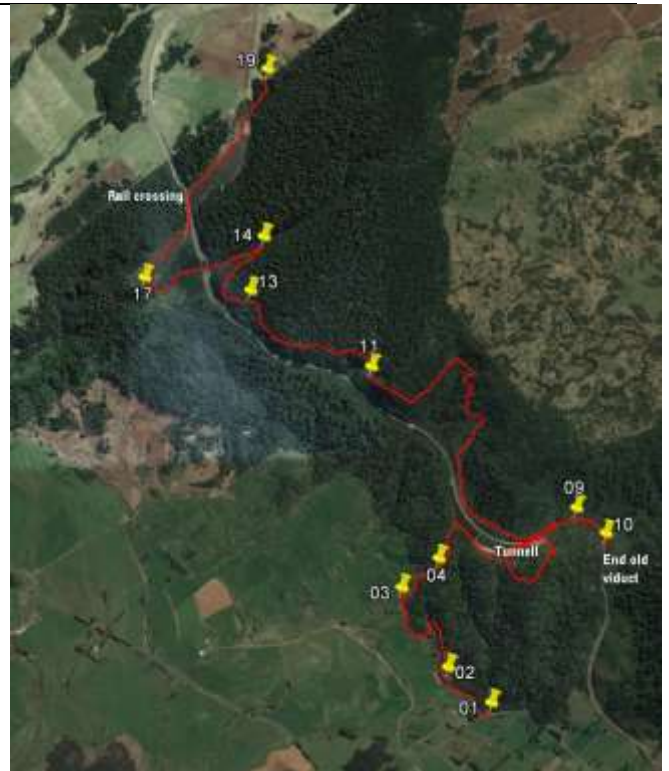


### Morning tea stop





Map and Google Image with GPS data



N...	Easting	Northing	Alt(m)	Description
01	1806057	5636727	547	Park at the end of Marshalls Road then walk down and over small bridge to notices
02	1805785	5636963	591	7min (400m); Signboard giving times of journeys now and in historical times. Fairly steep up!
03	1805507	5637488	649	22min (1.3km); Maps of proposed rail routes
04	1805753	5637670	666	30min (1.6km); Wooden trough and signboard about the road and road construction
05	1805886	5637955	665	35min (2km); Bend in track with sign Hapawhenua Viaduct 1.5km. Grass road becomes new gravel track
06	1806217	5637760	657	44min (2.5km); Turn right on track uphill or straight to enter tunnell
07	1806386	5637842	656	48min (2.7km); Locked gate at NE end of tunnell overlooking rail line, back-track down tunnell
08	1806488	5637813	650	1:04min (3.7km); Pass under present concrete viaduct
09	1806644	5637968	649	1:08min (4km); Start of old viaduct on walkway / bike track
10	1806829	5637801	650	1:19min (4.3km); Picnic table at end of old viaduct - back-track over viaduct
11	1805364	5638904	751	2:30min (7.5km); Notice-board at bend in track, heading N
12	1804679	5639311	728	2:45min (8.6km); Wooden bridge
13	1804594	5639414	734	2:50min (8.7km); Picnic table overlooking old Taonui Viaduct
14	1804680	5639758	719	2:57min (9.3km); Sharp bend and downhill
15	1804110	5639580	685	3:08min (10km); River bridge after passing under present viaduct
16	1803986	5639513	699	3:12min (10.2km) Pass iron viaduct
17	1803903	5639519	707	3:15min (10.3km); Old viaduct, go uphill to the right
18	1803972	5639537	714	3:18min (10.4km); Haeremare Bridge pillars
19	1804730	5640833	745	4:15min (12.2km); Gate to farmland and motorable gravel road

Notes:

- **GPS** Garmin GPSMap62 SC
- **WP** = Waypoint as taken by GPS unit
- **masl** = metres above sea level

From : 30-Aug-17 09:22:27  
To : 30-Aug-17 13:30:45

Time taken : 4:14:16  
Total Distance : 12,193 Km  
**GPS Distance 12.28 km**  
Minimum Speed : 0.000 KPH  
Maximum Speed : 8.376 KPH  
Average Speed : 2.856 KPH

Minimum Altitude : 571 Meters  
Maximum Altitude : 764 Meters  
**Total ascent 482 metres**