

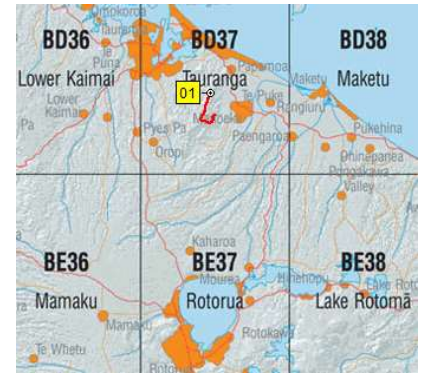
Otawa Ridge

Topo50 Map: BD37 Tauranga

NZTM GPS: NZTM on WGS84

How to get to START: It is about 2 hours driving from Taupo and the route is via Rotorua to pick up SH33 to Tauranga. On approaching Tauranga do not use the toll road but stay on SH33 to Te Puke. In Te Puke pick up Te Puke Quarry Road which does become gravel and keep a lookout for the car park on the left hand side of the road just where there is a sign for Reid Road South (**WP01231masl**).

Location

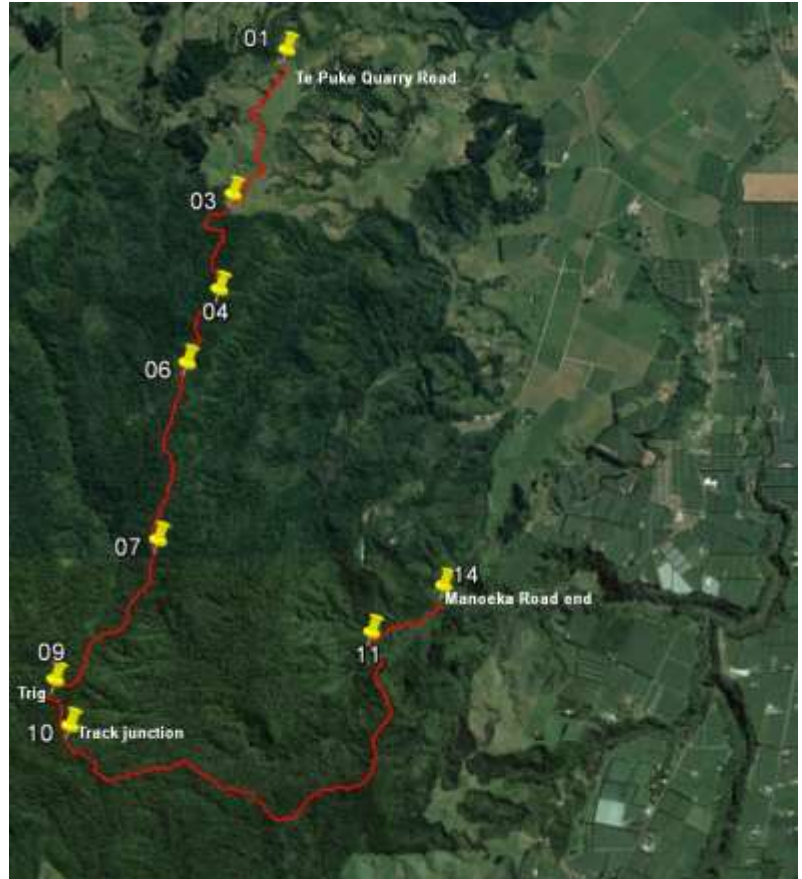


Rough description: A good 10km walk firstly on wide farm track through grazing land then in fairly dense forest where most of the track is clear and in a good state. The first half is basically uphill with only minor grunts whilst the exit is on much steeper slopes and some care is required. There are a couple of “tricky” little junctions marked with orange DoC track markers near the start where the track turns back on the mapped track heading for Whareotetarakeho Trig which is on private land.

Detail: From the car park there was an immediate problem where a farm gate was tied back against the exit stile. Once over the stile the track is wide, good and obvious.



There are not too many features to note apart from two locked farm gates with the second (**WP03314masl**) giving access from the farm to the woods.



Once into the woods the walking is very pleasant on good wide track for the most part but there are three small junctions to be aware of (**WPs04, 05 and 06**) where there is access to the “mapped” track as it heads back in a loop to the NE and the Whareotetarakeho Trig. Progress is upwards but slowly with a minor crest being reached in a bit over 90 minutes (**WP07467masl**) and another soon afterwards. There is a sharp turn to a descent (**WP08517masl**) after about two hours – there is a huge rock at the bottom which has “punga” with the profile of a head and shoulders with a high hat. Twenty minutes after this there is a highpoint with good views to the east and 10 minutes after this the Trig (**WP09570masl**) is reached in open woodland.

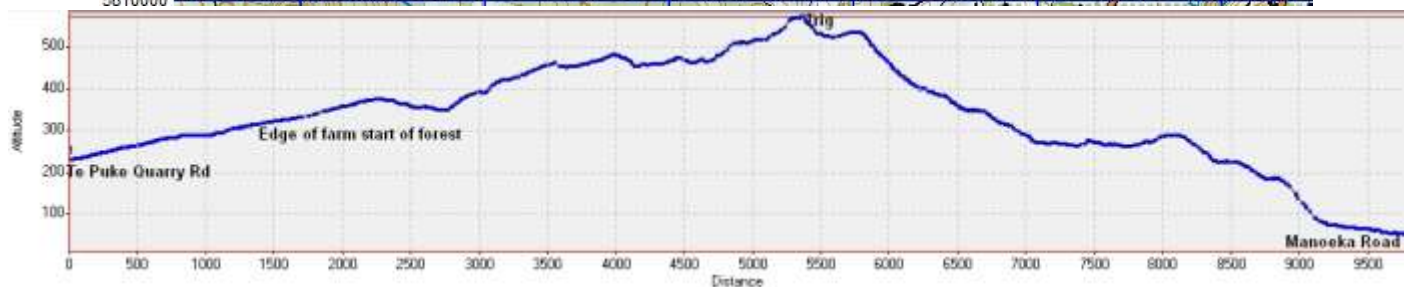
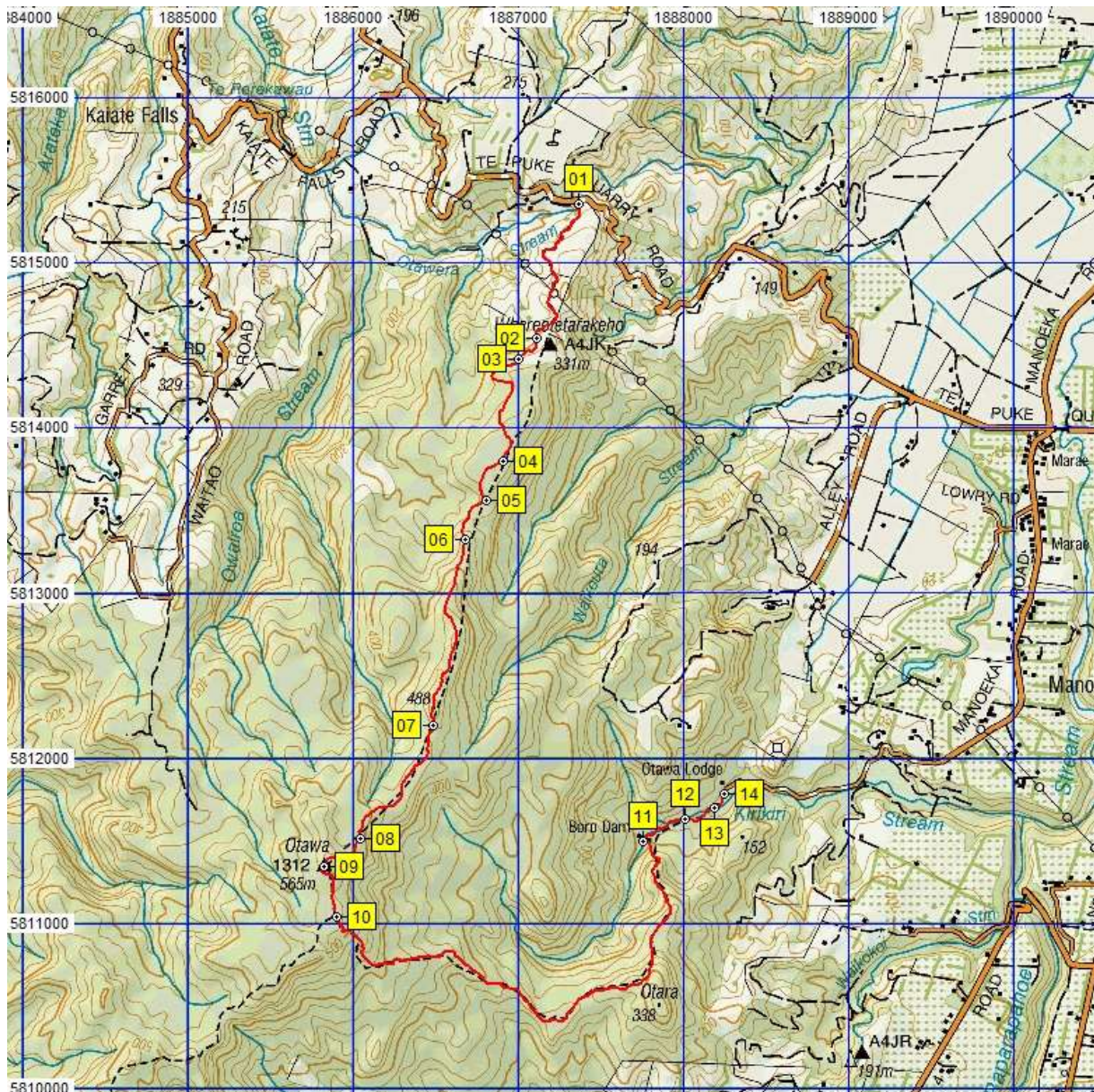
Three hundred metres to the S of the trig there is a track junction (**WP10534masl**) with a sign indicating the desired road end is less than 90 minutes away.

Ottawa Scenic Reserve			
Te Puke Quarry Rd	←	1 hr 50 min	5.3 km
Manoeka Rd	→	1 hr 25 min	4.1 km
Demeter Rd	↓	2 hr 30 min	7.2 km

However if you have dodgy knees the hard work of the day awaits as most of the slopes over the next 3-4km are a bit steep and care is required. Once off the slopes (**WP1184masl**) it is only 20minutes on more or less level ground with a few stream crossings to the car park (**WP1453masl**) near Ottawa Lodge at the end of the road.



Map with GPS data



Waypoints – NZTM

N...	Easting	Northing	Alt(m)	Description
01	1887361	5815363	231	Track start on Te Puke Quarry Road
02	1887113	5814544	296	20min (1.2km); Locked gate on wide farm track, orange markers on fence. Then up to left and rougher
03	1887001	5814418	314	38min (1.4km); Edge of farm at gate to woodland, huge views of coast
04	1886903	5813800	376	55min (2.3km); Wide forest trail to T-junction with left for Whareotetarakheo Trig. Go right
05	1886803	5813568	355	1:03min (2.6km); Junction marked by orange triangle track markers, go straight
06	1886680	5813330	375	1:10min (2.9km); Junction marked by orange track markers, go right
07	1886486	5812199	467	1:41min (4.2km); Minor crest after moderate grunt up on pleasant forest track
08	1886047	5811517	517	2:04min (5km); Sharp left and steep down to large rock with punga with face outline
09	1885828	5811340	570	2:13min (5.4km); Otawa Trig in open woodland for lunch
10	1885901	5811037	534	2:48min (5.7km); Marked junction with left for Manoeka Road, steep descents start
11	1887755	5811498	84.0	4:08min (9.2km); End of descent and meet wide track / old road. Go right to cross stream
12	1888014	5811631	65.0	4:13min (9.4km); Track is stream then meet bigger stream and cross
13	1888185	5811698	54.0	4:17min (9.7km); Yet another stream crossing
14	1888241	5811786	53.0	4:20min (9.8km); Open parking area near Otawa Lodge at end of Manoeka Road

From : 24-Aug-16 09:38:54
To : 24-Aug-16 13:59:06

Time taken : 4:20:12
Total Distance : 9.778 Km
GPS Distance : 10.75km
Minimum Speed : 0.018 KPH
Maximum Speed : 5.977 KPH
Average Speed : 2.255 KPH

Minimum Altitude : 52 Meters
Maximum Altitude : 573 Meters
Total ascent : 502metres

Notes:

- **GPS** = Garmin GPSMap 62sc
- **WP** = Waypoint as taken by GPS unit
- **masl** = metres above sea level