

## RABBIT PATCH

Topo50 Map: BH36 Motutere

### How to get to START:

- Exit Taupo on **SH5** for Napier.
- In about 20 minutes turn right into **Taharua Road**
- After another 7 – 8 minutes again turn right into **Clements Mill Road**
- Ten minutes on this gravel, forest road brings you to **Te Iringa** car park on your left
- Approximately 1 hour / 53km brings you to Army Road carpark on the RHS where there is a green, wooden DoC toilet

Once parked, walk to the bottom (N) side of the car park where a well defined track heading NNE can be located (**WP01722masl**).

**Rough description:** A very easy delightful walk in native forest, much of it well logged in the past, based on Army Road which is easy to follow to arrive at some open grassy meadow areas known as the Rabbit Patch. Currently no obvious signs of rabbits noted but there must have been an active population in the past.

A very good leaflet titled “[Early days at Clements Road – Kaimanawa State Forest Park](#)” can be obtained from the Department of Conservation, Private Bag Turangi Tel 8607 or P.O. Box 942, Taupo.



The expectation of rabbits was not met but a fair number of indicators of other wildlife activity abound, unfortunately the first being shown on the attached photo being cast aside by some insensitive hunter. In several places there were indications of deer, pig rooting, the odd butterfly plus a fairly active bird population by the amount of birdcall heard



The track starts off very nearly level offering very easy walking though in places the vegetation does creep on to the well-defined road. A few old giants of the forest do still stand and close-up views are offered by the one or two that have fallen on or bridge the road, the first of these being passed after 12min (**WP02525masl**). A change in terrain is noticed after 15 min when a small gully head (**WP03750masl**) can be seen on the right, then there are rolling slopes with some dissection. A large windfall has to be worked around after half an hour (**WP04705masl**) just as the track starts to head gently downhill and there is a vegetation change to Manuka (**WP05683masl**) then the grassy meadow of the Rabbit Patch is reached (**WP06665masl**). A bit of a loop is then followed to the WSW then the NNW going off on a vague track from **WP07667masl**.



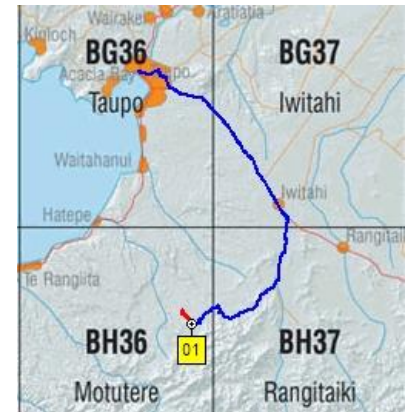
The track wanders around in the clearing before going back into the forest (**WP08674masl**) which is pretty open and very attractive at this point though the paint splodges marking the track are not always too obvious. Army Road is re-joined in just over an hour (**WP09684masl**) where a left turn is made to pop out into the open at a triple road junction with expansive views over an extensive area planted to conifers (**WP10676masl**).



NZ Grid GPS: Geodetic Datum 1949

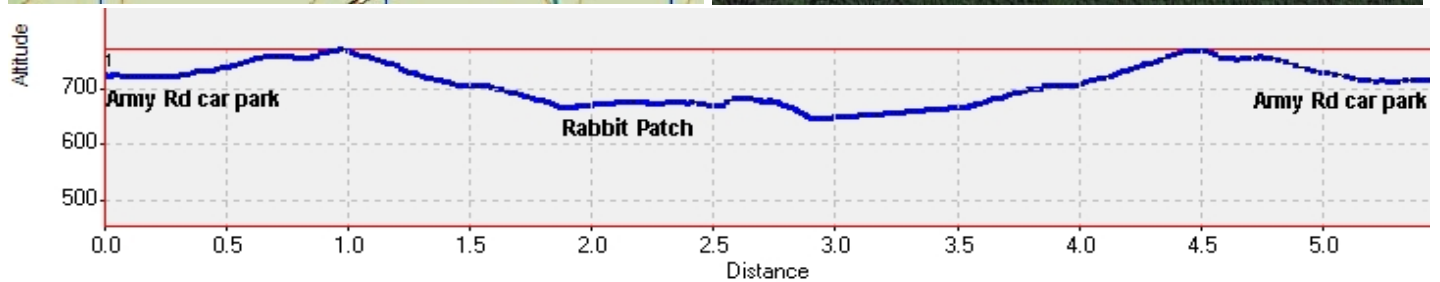
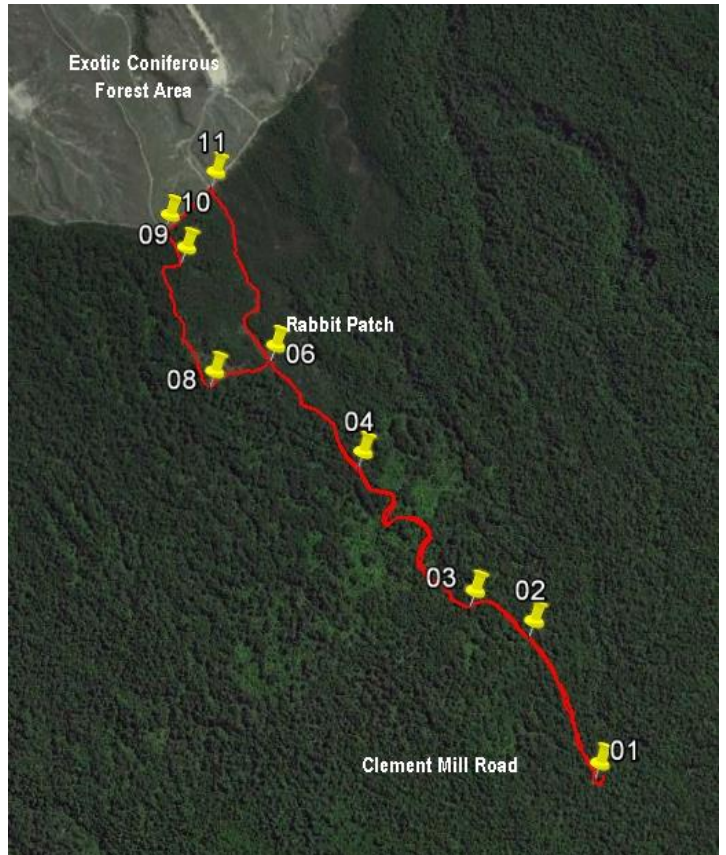
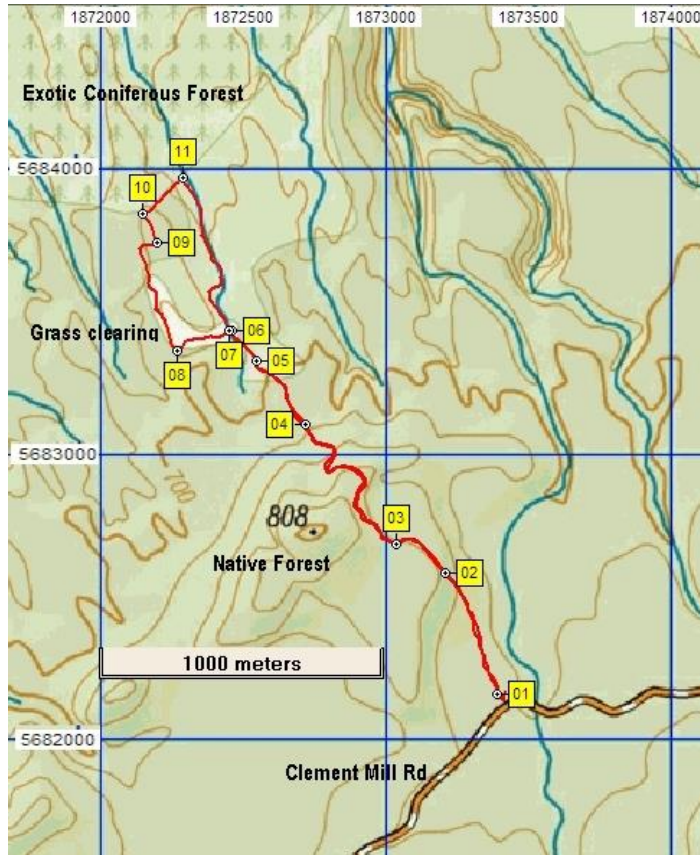
NZTM GPS: NZTM on WGS84

### Access



Travel times and distance are measured from Taupo Police Station

## Track and waypoints on map and Google Earth



N...	Easting	Northing	Alt(m)	Description
01	1873393	5682157	722	Start of road heading S out of Army Road car park on Clements Mill Rd
02	1873211	5682589	739	12min (525m); Giant forest tree bridging over the road (first one)
03	1873040	5682685	756	16min (750m); Small gully starting on RHS (E) of road and start of rolling area
04	1872716	5683105	705	30min (1.46km); Work round large windfall area in area with shallow rooting trees
05	1872547	5683322	683	35min (1.75km); Heading downslope and vegetation change to Manuka
06	1872458	5683435	665	38min (1.88km); Eastern Rabbit Patch - grassy clearing
07	1872450	5683432	667	52min (1.92km); Indistinct junction with Army Rd to the right and loop track to left
08	1872271	5683363	674	55min (2.11km); Wandering track weaving through clearing leading back into forest
09	1872197	5683741	684	1:11min (2.58km); Vague track with a few markers then left back on to Army Road
10	1872150	5683841	676	1:14min (2.7km); Forest edge clearing with three roads exiting and views of coniferous area
11	1872289	5683971	646	1:44min (2.91km); After lunch R off NE-heading road on poorly defined track with scratchy veg to SSE

This area overlooking the exotic (coniferous) forest makes a perfect lunch spot as there are areas suitable for sitting about and the views are pretty good with Tauhara just being visible as is Hinemaiaia Dam. From the lunch spot the return route heads along the road heading NE for a couple of hundred metres then turns right to the SSE (**WP11**<sub>646masl</sub>). The indistinct track basically follows the stream line from the Rabbit Patch which is where one ends up after, at times, fighting through the rather scratchy bushes in through which the track wanders. On the way a very old, rather unique beech tree with spreading umbrella-like branches is passed.



- Notes:
- **GPS** Garmin GPSmap 62sc
  - **WP** = Waypoint as taken by GPS unit
  - **masl** = metres above sea level