

PORONUI to OAMARU HUT

260 Series Map: Kaimanawa, U19

Topo50 Map: BH37 Rangitaiki

How to get to START:

- Exit Taupo on **SH5** for Napier.
- In about 25 minutes turn right into **Taharua Road** at 27.5km (**WP001**)
- At 37km pass turn off for Clements Mill Road (**WP002**), still on asphalt
- Road becomes gravel (**WP003**)
- At 43km Enter Poronui Station forested area through gate and wall (**WP004**)
- 44km T-junction signed Poronui Ranch (**WP005**)
- Gate across road (**WP006**), turn right and right again to public car park (**WP007**) above helicopter area at roughly 47km from Taupo and about 50 minutes driving.

Rough Description: A long (13.2km one way), in-and-out day tramp, better done as an over-nighter, from the end of the public access section of Taharua Road through Poronui Station on a poled track to the Oamaru Hut. The tramp involves two river crossings and these are not recommended if river flows are high, the first one over the Mohaka can be waist deep and does have strong flow. If you get trapped at the Hut due to water level then it is possible to get out via the Oamaru Track to Te Iringa – quite a long way and a bit of a grunt. Most of the walk through Poronui is on farm road or wide smooth gravel or grass tracks – all a bit too manicured for the hardened trumper but with scenery that is well worth seeing.

Detail: From the car park walk back to the gate (**POR01** 685masl) over the road and go through the “letter-box” access on the left hand side walking down a good gravel road with clear orange markers on poles. You pass the access to the “Ranch” within 10 minutes (**POR02** 668masl) then in 25 min slide right off the road through a meadow, good lunch spot, then round to the right over the road bridge over the Taharua River. The next T-junction off right is to the equestrian centre (**POR6** 674masl) then there is the Woolshed on your right (**POR7** 673masl).

At 1:15min walking (plus lunch) there is an open gate (**POR8** 662masl) in the deer fence on the right with an unnamed road running to the SW and 5 min later there is a bend in the road as you pass a pond or reservoir on the right then a slight detour crossing a ditch (**POR10** 660masl) to avoid a ford that crosses the road. In around 1:25 min (**POR11** 661masl) the road turns right but the poled track goes straight on to a grass track passing through gum trees (Eucalyptus). There are then a few junctions off the track you are on but the route is well marked and not all are mentioned though waypoints have been taken. In 1:40 min there is a T-junction (**POR13** 663masl) above Goose Bridge then Fingerling Crossing and Hare Alley goes off then rejoins (**POR17** 661masl) in 2:22 minutes.

The grass track meets a gravel road again in 2:40min where you go right on what TTC called “Bottie Brae” as the name was doctored to read Anal Road (**POR19** 666masl) discretion means that I have named it Amal Road in the waypoints. Still in gum trees you then pass two turn offs to Mavis’s Lookout – whoever Mavis was! In 2:55 there is a right turn into Duck Pond Road (**POR21** 682masl) and minutes later there is a fence line where you leave the gum trees and enter coniferous forest then get a viewpoint out over the Mohaka (**POR23** 687masl)

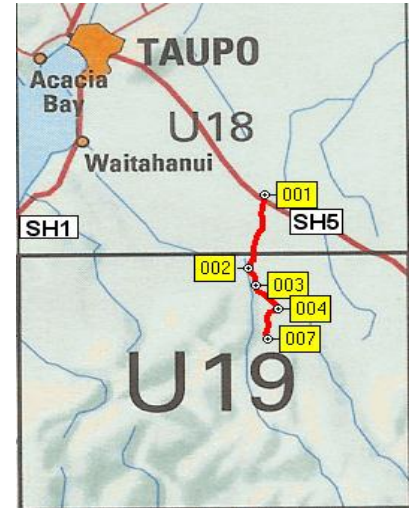
Goose Bridge



NZ Grid GPS: Geodetic Datum 1949

NZTM GPS: NZTM on WGS84

Access



The Ranch turnoff



House with a view

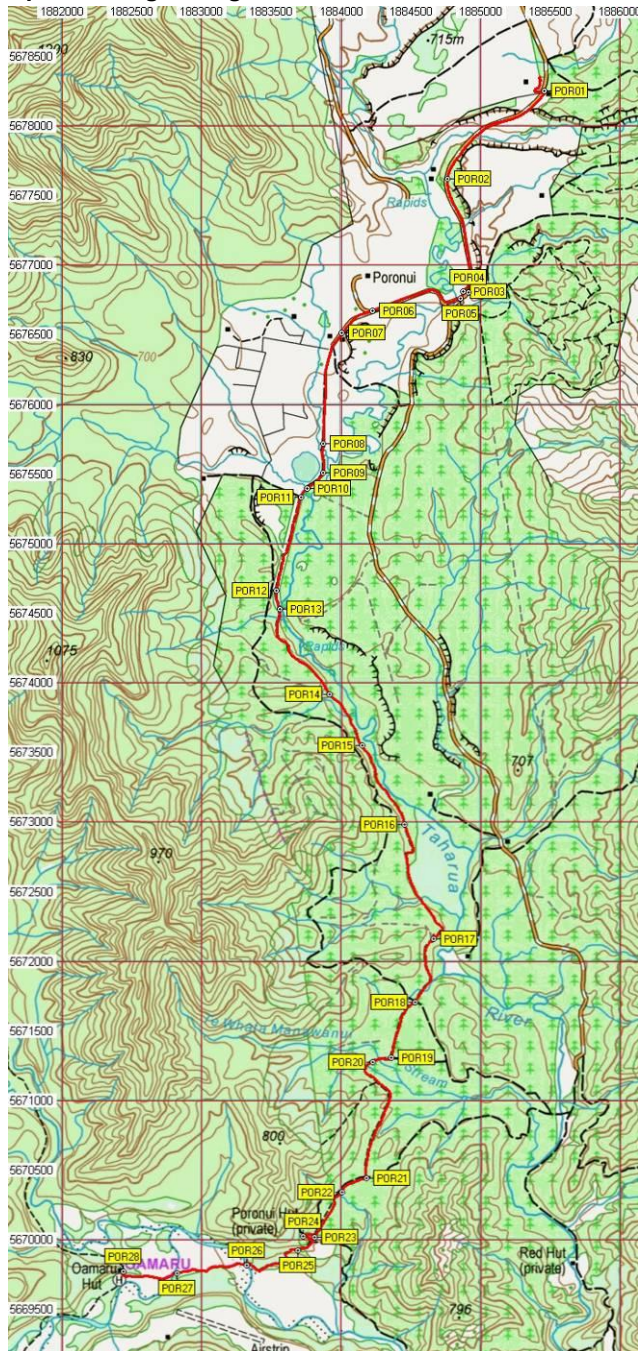


After the viewpoint there is a cross roads in the woods where you go left and downhill on a steeper section and at the bottom there is a Y-fork from Oamaru Road to the Mohaka Esplanade and by going right you leave the trees and enter an area of manuka on a rougher track and come to another fence, gate and stile on the boundary of the Poronui Station. It is steep downhill from here to the Mohaka floodplain which is rough and stony to bouldery.

The first river crossing (**POR26** 630masl) presents itself in about 3:25 minutes and this is over the Mohaka – it is cold, the stones in the bed are slippery, it can be deep and quite strong flowing. Head for some of the calmer sections since they may seem wider and can be deeper but the currents are less.

There is a section of tussock after the crossing then some rough going through swampy bits with a poor path and over-growing manuka. The second river crossing is only minutes later but this one, over the Oamaru River, is less daunting and much easier. It is then less than 10 minutes to the hut (**POR28** 646masl) which sits on a shelf above you so the last few metres are a slight push uphill.

Map and Google Image with GPS data



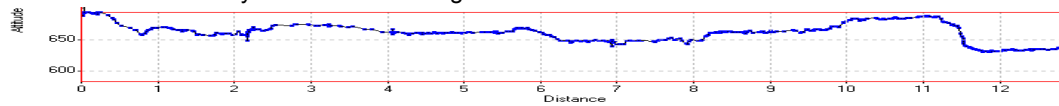
Waypoints – NZ Grid

Name	Easting	Northing	Alt(m)	Description
POR01	2795423	6240297	685	26-AUG-07 Poronui Station Security Gate
POR02	2794725	6239671	668	10min walk: T-junction plus sign to right for Poronui Ranch
POR03	2794842	6238861	659	24min walk: Poled track off right 50m before Fletcher Road T-junction
POR04	2794876	6238854	664	25min walk: T-junction to left for Fletcher Road
POR05	2794824	6238811	667	30min walk + 30 min lunch; Bridge over Taharua River
POR06	2794187	6238720	674	1 Hr walk; Road branch off right for equestrian centre
POR07	2793971	6238561	673	1:06min walk: The Woolshed on right hand side with house on left
POR08	2793834	6237771	662	1:15min walk: Open gate in deer fence with gravel road running SW
POR09	2793838	6237560	660	Bend in road opposite pond / reservoir
POR10	2793722	6237445	660	1:20min walk: Footbridge over ditch in line with ford in road
POR11	2793676	6237384	661	1:22min walk: Road turns to right and poled track goes straight
POR12	2793499	6236713	662	1:35 min walk: F.R.I. Road joins from the right
POR13	2793525	6236581	663	1:40min walk: Go right at T-junction above Goose Bridge then bear left
POR14	2793880	6235969	654	1:50min walk: Go straight with Fingerling Crossing off right at T-junction
POR15	2794111	6235603	647	1:55min walk: Y-fork, go right and upwards on rougher track with some gorse
POR16	2794416	6235037	649	2:06min walk: Hare Alley off right just before gate / stile into gum trees
POR17	2794620	6234217	661	2:22 min walk: Hare Alley rejoins from right, then "Pink House" on the left
POR18	2794488	6233762	662	2:32min walk: grass cross roads, go straight
POR19	2794319	6233361	666	2:38min walk: Go right on meeting Amal (Bottie Brae) Road at a bend
POR20	2794186	6233334	665	T-junction to right and Mavis's Lookout
POR21	2794141	6232497	682	2:55 min walk: Go right at T-junction on Duck Pond Road
POR22	2793966	6232399	685	2:58min walk: Fence with gate from gum area to conifers
POR23	2793771	6232074	687	3:03 min walk: viewpoint out over Mohaka River then start downhill
POR24	2793689	6232079	686	Cross roads in trees, go left and down on steeper section
POR25	2793649	6231983	674	Go right at Y-fork at bottom from Damaru Road to Mohaka Esplanade
POR26	2793285	6231874	630	3:25min walk: Mohaka River crossing, strong current and deep
POR27	2792786	6231819	635	3:34min walk: Damaru river crossing - less deep and slower
POR28	2792398	6231827	646	3:44min walk: Damaru Hut (Walk time 3:15 plus breaks)

NZTM

Easting	Northing
1885446	5677980
1884748	5677353
1884866	5676543
1884899	5676535
1884848	5676492
1884210	5676401
1883995	5676242
1883858	5675451
1883862	5675240
1883746	5675125
1883700	5675063
1883523	5674392
1883550	5674260
1883906	5673648
1884137	5673281
1884442	5672716
1884647	5671895
1884516	5671439
1884347	5671038
1884213	5671011
1884169	5670173
1883994	5670075
1883799	5669750
1883717	5669755
1883677	5669659
1883313	5669549
1882814	5669494
1882425	5669502

As can be seen in the profile of the tramp there is very little altitude gain / loss on this tramp and GPS data indicate only 65 metres overall gain and loss.



Total Distance : 13.197 Km
 Minimum Speed : No Time
 Maximum Speed : No Time
 Average Speed : No Time
 Minimum Altitude : 630 Meters
 Maximum Altitude : 694 Meters

Crossing the Mohaka



If river levels rise it may not be possible to exit by the same route but it is possible to leave via the track heading NW which goes to Te Iringa – a long but possible route. The Te Iringa track is labelled on the map.

The hut is quite smart with two dorms (6 bunks in each) and a kitchen area with sink plus running water and a coal fired-stove. Water supply is from a roof tank and safe plus the toilet is a new long-drop in good condition.

Oamaru Hut



- | | |
|---------------|---|
| Notes: | <ul style="list-style-type: none"> • GPS = Garmin GPSmap 60CSx • WP = Waypoint as taken by GPS unit • masl = metres above sea level (as recorded by GPS unit and may not agree exactly with map spot heights) |
|---------------|---|