

KAWAKAWA BAY via WHANGAMATA ROAD

260 Series Map: Kuratau T18

Topo50 Maps: BG35-Tihoi & BG36-Taupo

How to get to START: Exit Taupo Northwards on SH1 over the control gates bridge then left near the top of the hill to Poihipi Road

- left to Whangamata Road signposted to Kinloch
- straight past the left turn signposted to Kinloch
- 7.5km from Kinloch Road pass Kawakawa Road on the left
- track starts 1km further on LHS of the road
- park (**WP01**) where there is space on the wide verge – almost a car park

Rough description: This is a pleasant, easy walk rather than a tramp covering just over 18km with about 400metres of ascent on well-constructed bike tracks that takes around 4 to 5 hours depending on the mood and the weather. It can be done in any weather and, if wet and nasty, stopping to admire things might not appeal so times can be quicker. Roughly half way Lake Taupo is reached at Kawakawa Bay where there is a DoC toilet and rock climbers can often be seen or heard just off the main track. From here it is about 2 hours out to Kinloch.

Detail: As noted above the track or trail starts(**WP01**^{518m}) about 10km after the Kinloch turn-off on Whangamata Road. There is a fair bit of parking if the vehicle is to be left here – such as when doing an in-and-out excursion – otherwise someone should move the vehicle to meet walkers as they come out on the Kinloch foreshore.

The trail starts off following a small valley with farmland on the left or eastern side. After about 20 minutes the first section of boardwalk (**WP02**^{502m}) is reached from where there are views of wetland to the east.

The trail then parallels this wetland for quite some time and a small pond (**WP03**^{483m}) within the farmland to the right (west side) is reached in a bit over half an hour and Pukeko and Paradise duck have been noted here. Ten minutes later a tunnel (**WP04**^{470m}) is used to pass under a farm road.

Wide boardwalk



The trail now heads more and more to the ESE and a series of three real bridges, as opposed to boardwalk bridges, are encountered. The first two of these cross seriously deeply incised gullies (**WP10** & **11**) whilst the third (**WP12**^{364m}) crosses the Waitapu Stream. The slopes have now all gone as the trail is now virtually on the shelf above the lakeshore and it then meets the original Kawakawa Bay track some short distance north of the DoC toilet (**WP14**^{359m}) on the lake edge.

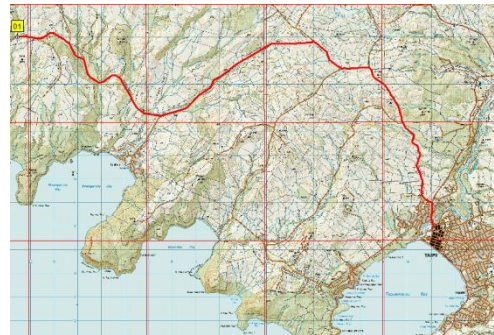
From here the way out is to the NE following the well-established track. If time and conditions allow it is possible to take a five minute side trip on the spur track in to the wall (**WP15**^{372m}) used by rock climbers. Another small feature to note and possibly investigate is the small side gully going off to the left (**WP16**^{388m}) less than a kilometre up the track. There is now semi serious altitude to be gained to reach the look-out rock (**WP17**^{498m}) which offers magnificent views over the lake towards the mountain.

From the look-out rock there is about 5km to cover requiring about another hour on the undulating to rolling track which eventually emerges on to the lake-shore near the Okaia Stream less than a kilometre from the car park, toilets and shops in Kinloch.

NZ Grid GPS: Geodetic Datum 1949

NZTM GPS: NZTM on WGS84

Access & Location



The RED line is the road route to the start WP01 about 10km past the junction to Kinloch

Start on Whangamata Road



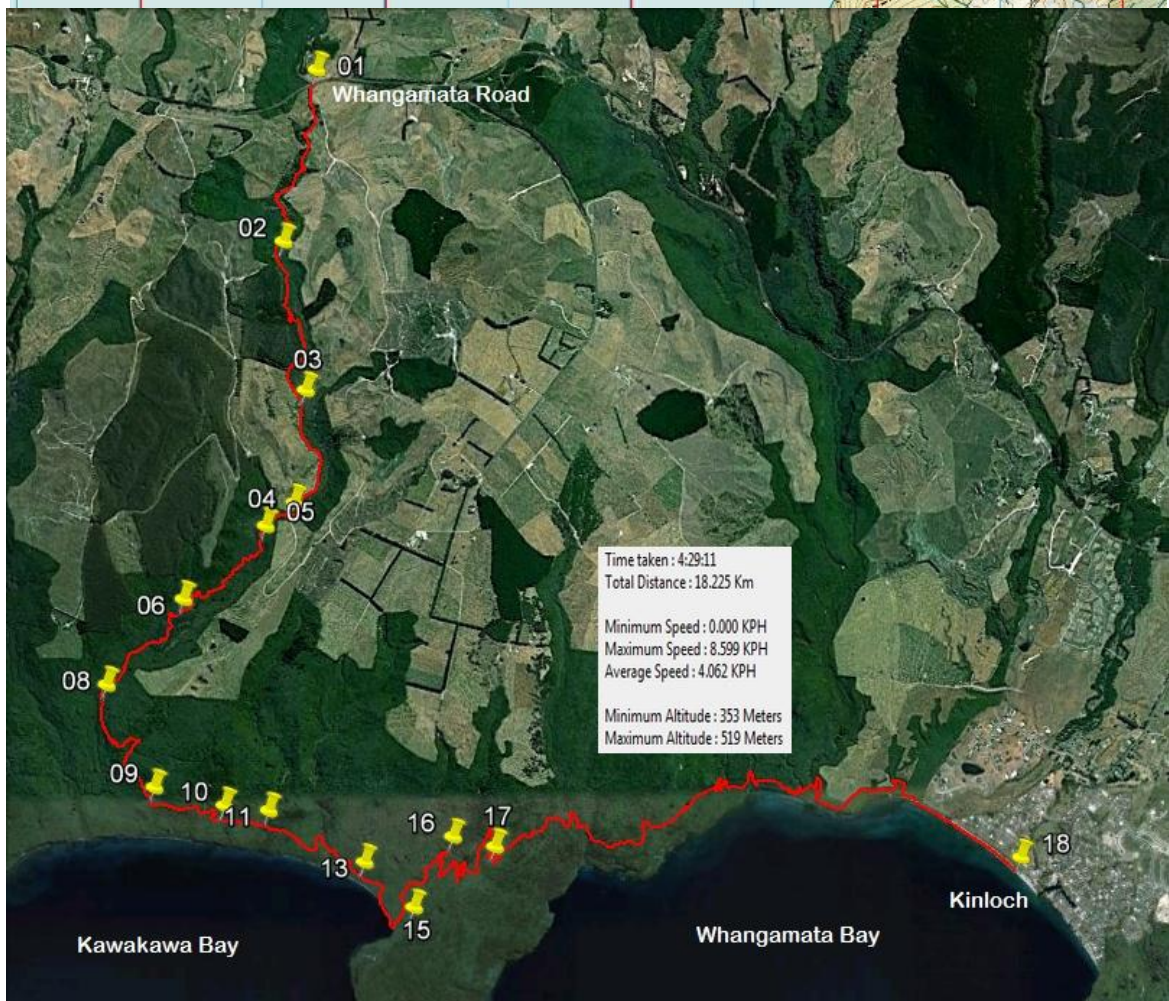
Beyond this point there is more native bush than farmland to be seen and there are a few regular slopes to be ascended but these are not steep. A few more sections of boardwalk (**WP05**^{460m}) or boardwalk bridges are encountered then for the weary there is a seat (**WP06**^{461m}) at roughly 5km with views over the farmland to the south-east. From here the trail drops down to cross a couple of stream lines (**WP07**^{438m}) then climbs up to a saddle where direction swings from SW to south and soon views (**WP08**^{430m}) of Lake Taupo are offered.

From here the trail more or less sits on the contour with slight dips to get over the odd stream line and direction changes to the south east when even better views of the lake are offered as well as well sited seats (**WP09**^{426m}) to admire these views. This is at about 7km distance and after this altitude is lost as Kawakawa Bay is approached.

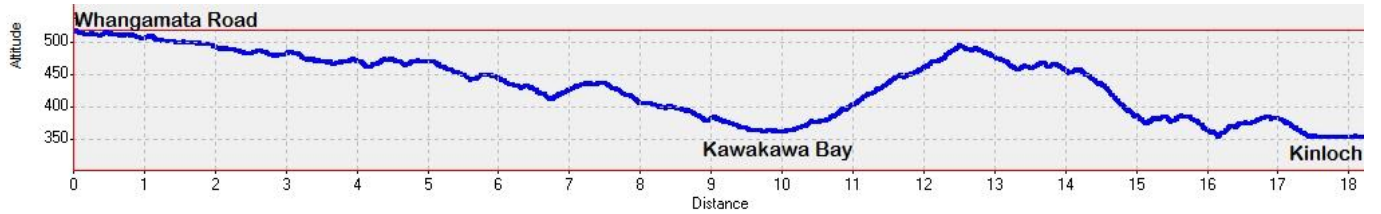
Some exposure to the elements



Map and Google Image with GPS Data



Data



NZTM Waypoints

Na...	Easting	Northing	Alt(m)	Description
01	1849423	5722010	518	Start of track 10km past turn to Kinloch on Whangamata Road
02	1849156	5720887	502	20mins; Large boardwalk with views of wetland on East side
03	1849271	5719894	483	35mins; Small pond on West side with Pukeko and Paradise Duck
04	1849165	5719151	470	45mins; Tunnel under farm road
05	1848966	5719002	460	50mins; Wide section of boardwalk bridge
06	1848400	5718530	461	1:03min; Seat with views of farmland etc to SE
07	1848157	5718328	438	1:10min; Boardwalk bridge
08	1847858	5717976	430	1:13min; First views of Lake Taupo to the south
09	1848148	5717278	426	1:27min; First of two wooden seats with good lake views
10	1848606	5717138	396	1:35min; Real bridge over deep gully
11	1848893	5717093	387	1:38min; Second real bridge over very deep gully
12	1849271	5717018	364	1:45min; Bridge over Waitapu Stream
13	1849527	5716725	361	1:52min; Track end on 7th May 2012
14	1849717	5716329	359	DoC toilets at Kawakawa Bay
15	1849858	5716415	372	Small spur track to reach rock climbing area
16	1850139	5716882	388	2:48min; Small gully just accessible to NNE with pumice walls
17	1850435	5716816	498	Lookout rock, about 5km one hour to go
18	1853960	5716613	350	4:29min; Park Kinloch lakeshore

NZ Grid

Easting	Northing
2759551	6283811
2759282	6282688
2759397	6281696
2759290	6280953
2759091	6280804
2758525	6280334
2758281	6280132
2757983	6279780
2758272	6279082
2758729	6278942
2759016	6278896
2759394	6278821
2759650	6278528
2759839	6278133
2759980	6278218
2760261	6278684
2760557	6278618
2764080	6278412

Even ex-Presidents use umbrellas on wet days



A seat promising a view



Millpond version of Lake Taupo



Had time to catch a fish



Notes:

- **GPS** Garmin GPSMap60 CSx on WGS84 and NZTM
- **WP** = Waypoint as taken by GPS unit
- **masl** = metres above sea level

May 2012

NZTM Grid